

Using the Ellison Model to Achieve Inclusive Community Building at Nova Southeastern University



The Ellison Model

- Holistic approach involving a community of people acting in concert to perform organizational tasks in caring, sharing, and loving
- Operates as a system using basic principles of diversity, unity, and community
- Aims at nurturing inclusive relationships within the university and surrounding community

The Mission of Nova Southeastern University

- To provide high quality educational programs of distinction from pre-school through the professional and doctorate levels
- To serve the community
- To foster inquiry, research, and creative professional activity by uniting faculty and students in acquiring and applying knowledge in clinical, community, and professional settings

Assessment of *CommuniVersity*

- How many students are aware of the 31 clubs and organizations on campus?
- How many students can access them?
- What are the attitudes of students toward co-curricular activities at NSU?
- Are there any collaborative efforts between the various institutions at NSU in addressing the lack of information flow?

Statement of the Conflict

Insufficient departmental cohesiveness and miscommunication or the lack of communication between university divisions and the student body contributes to the deficiency of inclusive community building at Nova Southeastern University.

Purpose and Objective of the Project

- To investigate and assess whether programs at NSU are reaching their target audience
- To develop a framework to identify and analyze communication gaps at NSU based on the Ellison Model



Significance of the Project



- ✓ To measure the performance of policy and program implementation on NSU campuses
- ✓ To strategize and review issues of cross-cultural importance

Does NSU Have the Potential for *CommuniVersity*?

- 31 undergraduate clubs and organizations
- 8 graduate clubs and organizations

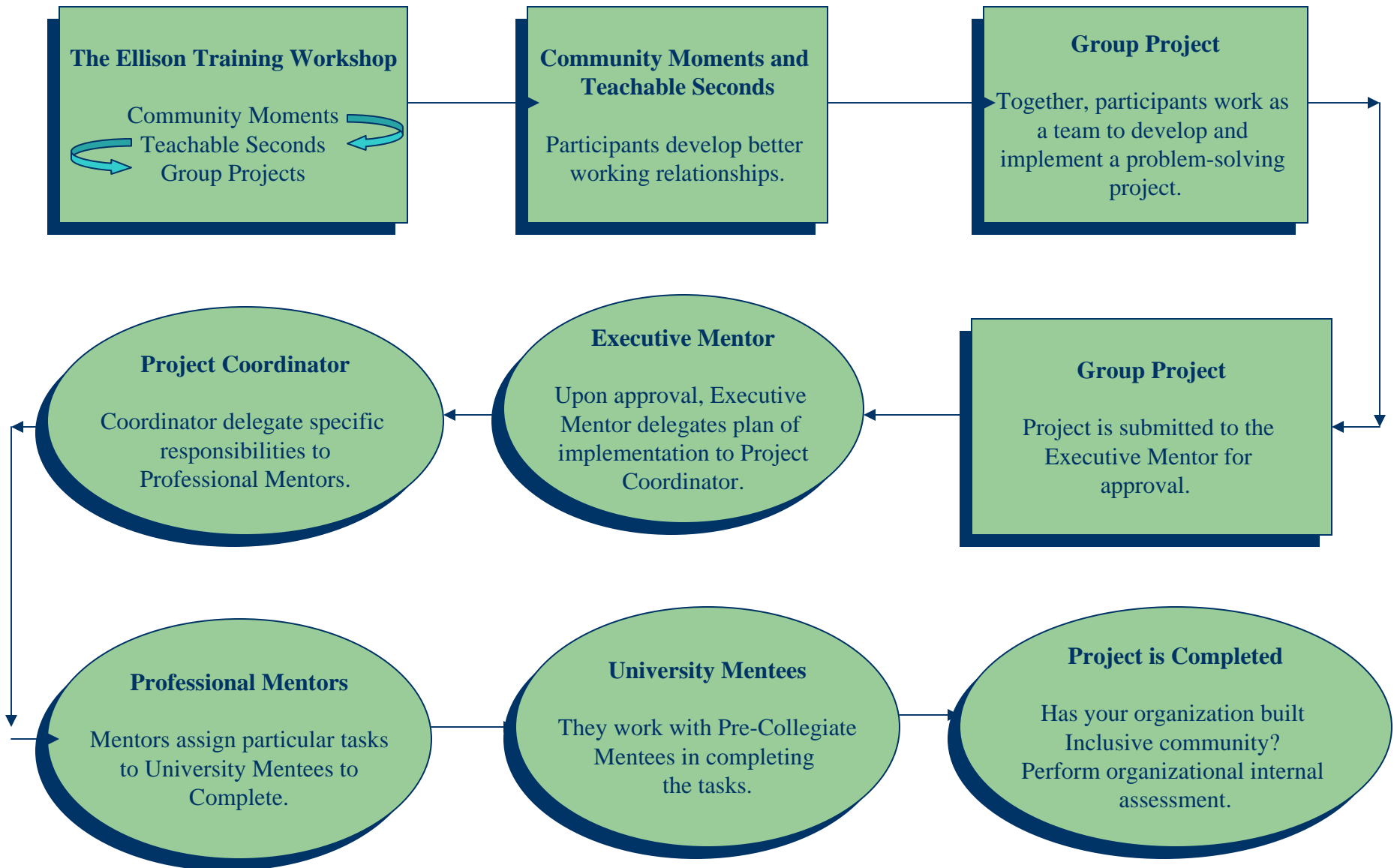


Who Is the Target Population?

- In its pilot program, the project will target the undergraduate population
- NSU offers undergraduate programs in:
 - Farquhar College of Arts and Science
 - Associate of Arts in Early Childhood Education
 - Bachelor of Science in Nursing (DHPD)

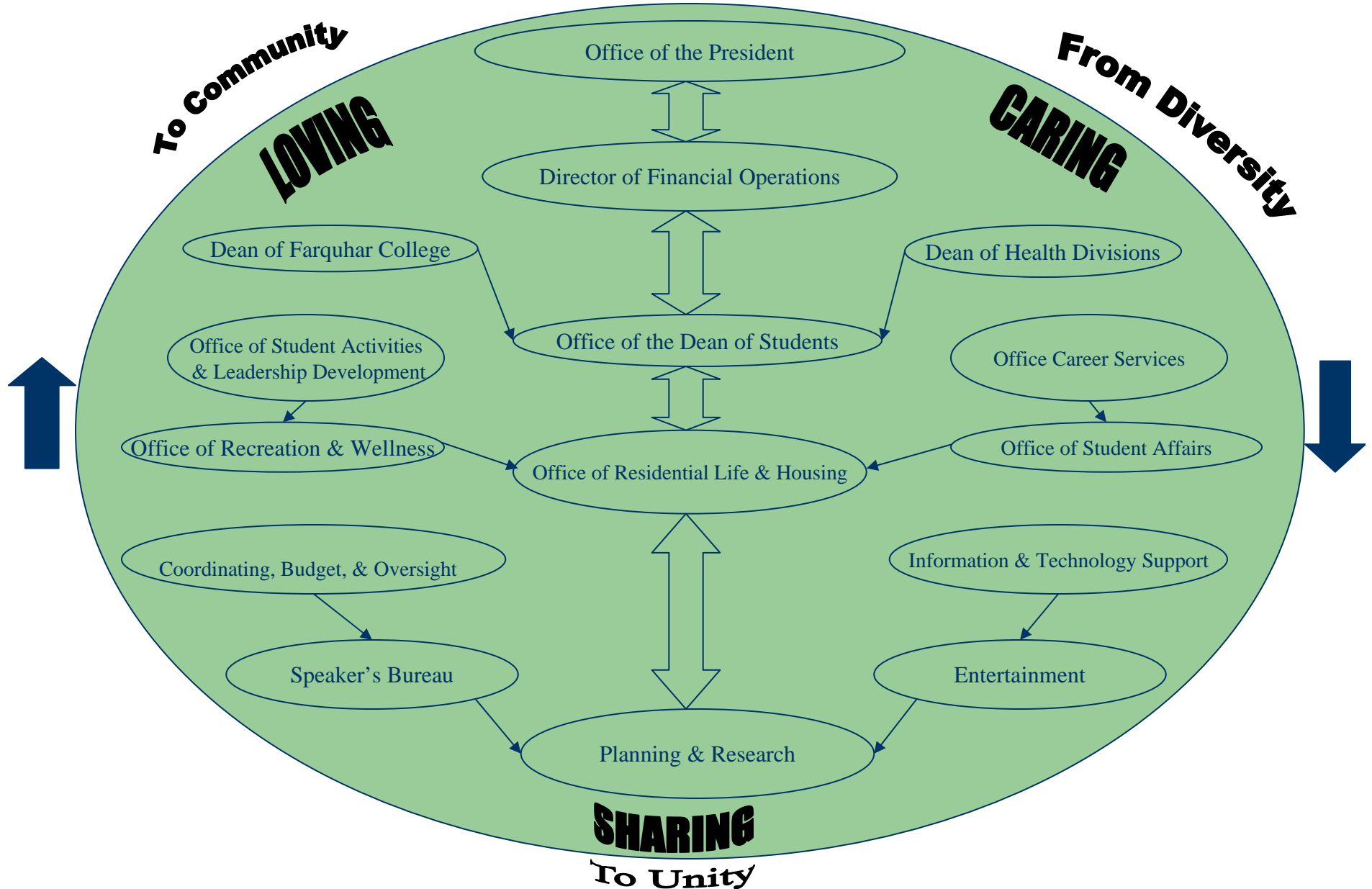
The Ellison Executive Mentoring Inclusive Community Building Model

Flow Diagram Indicating Steps in the Development and Implementation of a Project for your Organization



THE ELLISON MODEL

SHARING PERSONAL & PROFESSIONAL EXPERIENCE



Giving Feedback ~ Respecting Right Ways ~ Honoring the Honorable

“Executive Mentor”

- Financial Operations Department
- Responsible for:
 - Allocating funding
 - Mentoring six representatives from the Student Affairs Division
- Collaborative effort with the Office of the President of NSU and the Dean of the Students

“Project Coordinators”



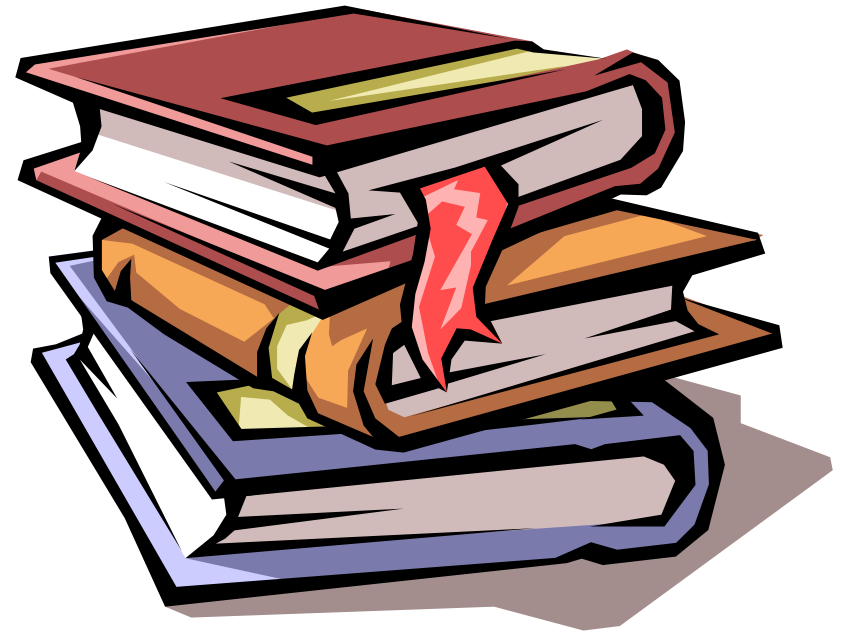
- Lateral collaboration between:
 1. *Office of the Dean of Students (DOS)*
 2. *Dean of the Farquhar College (DFCAS)*
 3. *Dean of the Health Divisions Department (DHPD)*

Office of the Dean of Students Consists Of:

1. *Division of Student Affairs*
2. *Office of Student Activities & Leadership Development*
3. *Office of Recreation & Wellness*
4. *Office of Residential Life & Student Housing*
5. *Office of Career Services*
6. *Office of the Student Union*

Dean of the Farquhar College Consists of the Following Academic Programs:

- ✓ Business and Administration Studies
- ✓ Behavioral Sciences
- ✓ Math, Science, and Technology
- ✓ Business and Professional Management
- ✓ Liberal Arts
- ✓ Education



Dean of the Health Divisions Department Incorporates:

- Nursing Program
- College of Allied Health
- Physician's Assistant
- Physical or Occupational Therapy
- Audiology



Undergraduate Student Involvement

- Minimum contribution of two terms
- Maximum of 33% of final grade in designated courses
- Department deans and directors will be responsible for assigning students to specific projects based on specific training skills and abilities

“Mentors”

- Finance Operations will mentor six coordinators from the Student Affairs Division
- All departments of Student Affairs will have a lateral relationship
- Each department will nominate a representative to “mentor” one of the sub-committees of university students
- Critical role in terms of organization, familiarity with the operations of NSU, and budget management

“Mentors” Continued

- Office of Student Activities and Leadership will bear significant responsibility by means of:
 - Knowledge of clubs and organizations
 - Providing clinics for leadership training for university and community



“Mentees”

- One representative from each of the thirty-one (31) clubs and organizations on campus
- Goal is to seek volunteers committed to developing leadership skills and integrating diverse populations at NSU
- Students are rewarded by receiving course credit

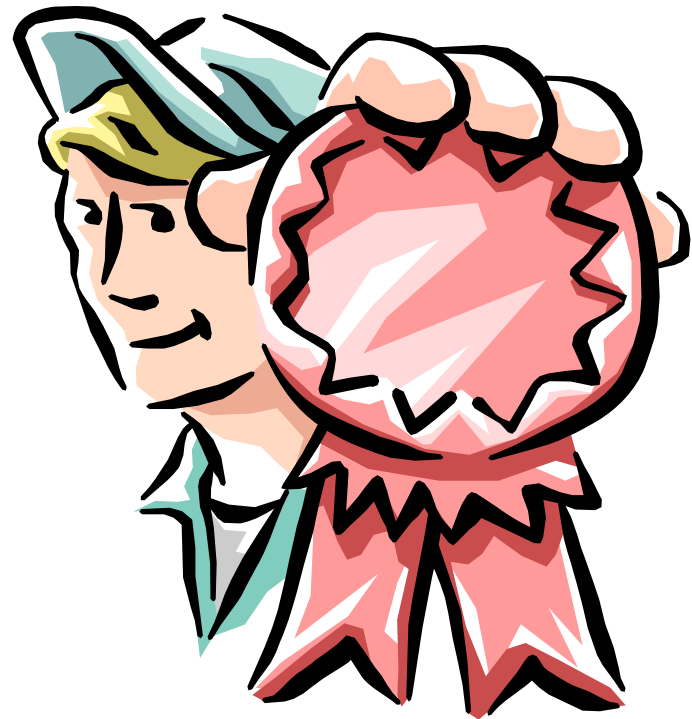


“Initial Mentees”

- Trailblazers for student development
- Having completed at least one term, this student will have experienced the positive effects of exposure to clubs and intercommunity
- Opportunity to improve academic abilities as well as social skills

Goal of “Mentees”

- Increase membership in all clubs
- Promote benefits of club affiliation
- Encourage participation from all members of the NSU community
- Work actively to curtail rituals of hazing, intuition, and the “rite of passage” into clubs



“Mentors of Student Volunteers”

- Knowledge of project and each sub-committee
- Each sub-committee will have at least one representative from the Student Affairs Departments
- Benefit of familiarity with NSU processes and financial operations

Student Affairs Sub-Committees

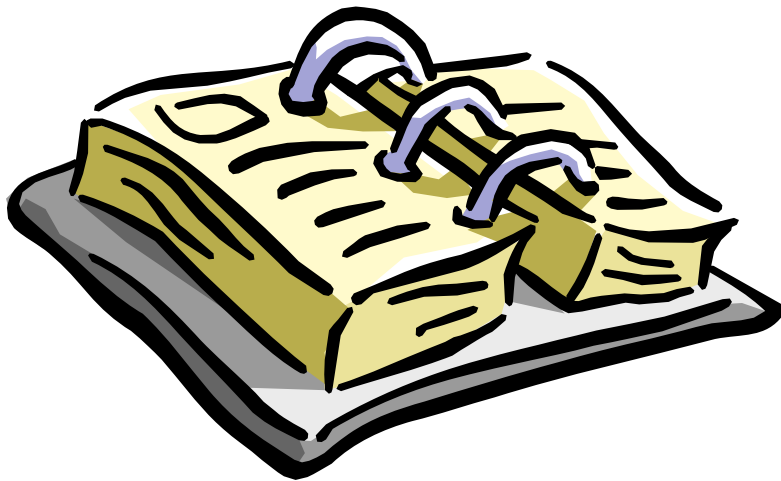
1. *Coordinating, Budget and Oversight*
2. *Planning and Research*
3. *Speakers Bureau*
4. *Entertainment*
5. *Information and Technology Support*

Coordinating, Budget, and Oversight Sub-Committee



- Control of the budget
- Familiar with financial operations procedures
- Liaison with the Office of Dean of Students
- Manage activities and sub-committees

Planning and Research Sub-Committee



- Determine dates to coordinate functions
- Develop and implement new activities/clubs to increase community building
- Liaison between Entertainment sub-committee and other NSU departments

Speakers Bureau Sub-Committee

- Responsible for promotional campaigns
- Understand mission of each club and organization
- Mentor will be skilled in public speaking and public relations
- Target incoming freshmen to serve as mentees

Entertainment Sub-Committee



- Responsible for organizing activities to promote thirty-one clubs and organizations
- Inform target population of mission of each club and organization

Information and Technology Support Sub-Committee

- Responsible for sharing information via methods of technology
 - Current students
 - Incoming students
 - Potential students



The End Result

❖ CommuniVersity

- Unification of the undergraduate programs, departments and the student body
- Increase of student involvement and satisfaction
- Enhancement of academic and social programs not only to the community but also to current and potential students